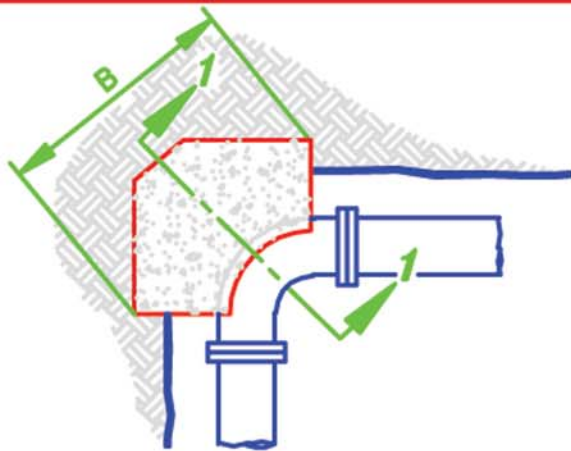
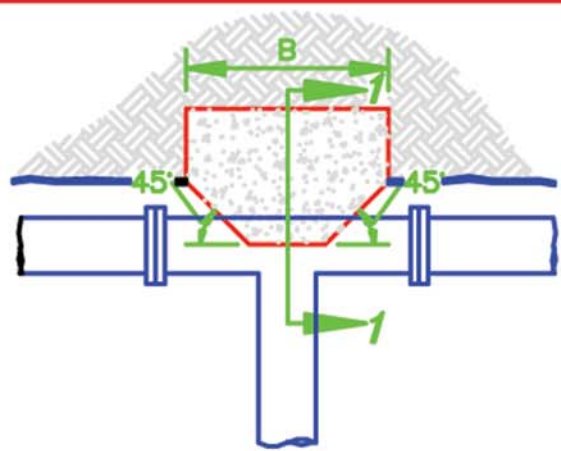


LONGS PEAK WATER DISTRICT

DISTRICT SPECIFICATION DETAIL DRAWING



AT BEND

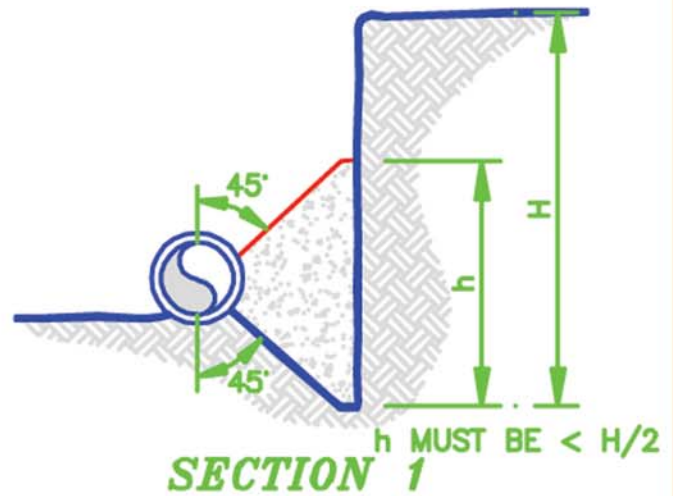


AT TEE

NOTES:

- 1) BEARING AREA= $B \times h$
- 2) ALL CONCRETE SHALL BE POURED AGAINST UNDISTURBED EARTH.
- 3) THRUST BLOCKS SHALL BE USED FOR ALL BENDS $\geq 11 \frac{1}{4}'$ & ALL PLUGS
- 4) ALL FITTINGS & PLUGS MUST BE WRAPPED WITH POLYETHYLENE TO PREVENT CONC. FROM ADHERING TO THE BOLTS OR PIPE.

200 P.S.I. PRESSURE TESTING
2000 #/FT² SOIL LOADING



SECTION 1

BEARING AREAS FOR VARIOUS FITTINGS (FT.²)

SIZE	TEE & PLUG	90° BEND	45° BEND	22 1/2° BEND	11 1/4° BEND
6"	3.5	4.5	2.5	1.5	1.0
8"	5.5	7.5	4.0	2.0	1.5
10"	8.0	11.5	6.0	3.5	2.0
12"	11.5	16.0	9.0	4.5	2.5
14"	15.5	22.0	12.0	6.0	3.5
16"	20.0	28.0	15.5	8.0	4.0
18"	25.5	36.0	19.5	10.0	5.5
20"	30.5	43.5	24.0	12.0	6.0
24"	44.5	63.0	34.0	18.0	9.0
30"	69.5	98.0	53.0	27.5	14.0
36"	99.5	140.5	76.0	39.0	20.0
42"	134.5	190.0	103.0	53.0	26.5

HORIZONTAL THRUST BLOCKS

SCALE: NONE

REV. 1-1-06